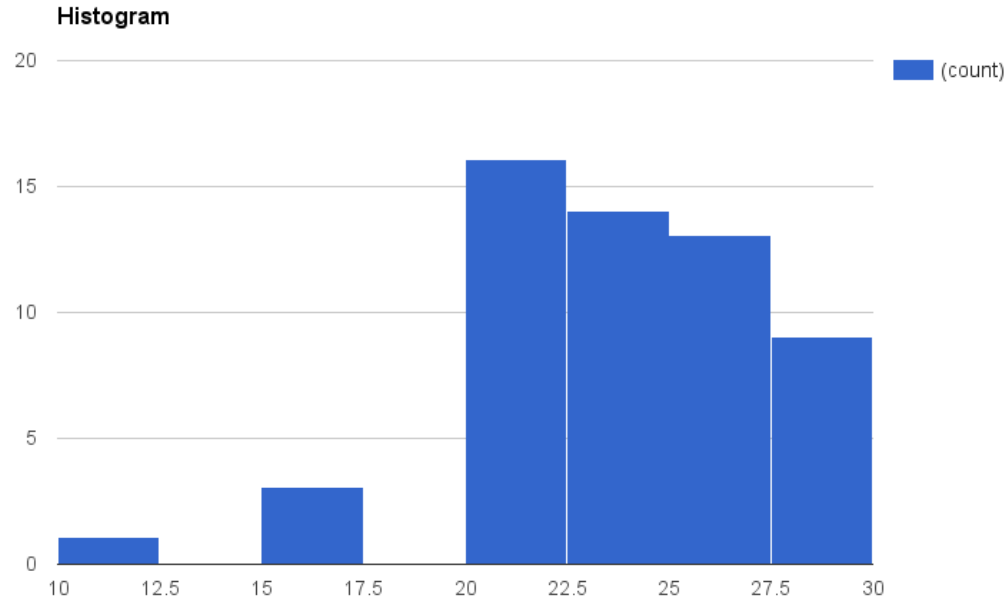


# Grade Distribution



Possible Points: 25 +  
2.5 extra credit

Mean: 23.5  
Median: 24.5  
Std: 3.26

# Advice for Next HW

Include the outputs we ask for in your report

Discuss how you solved the problems. E.g.

1. How did you handle repeated states and finding a better path on frontier in Part 1?
2. How did you update the goal state for part 3?
3. Explain why your heuristic is admissible.

These are all problems you needed to solve for this hw, so discuss how you did so in the report.

# Submissions

Submit projects to your folder in the course directory  
`/afs/cs.unc.edu/project/courses/comp560-f15/users/`

Include at least one group member's username and last name in your pdf submission

`Username_Lastname.pdf`

Your graded reports are in the folder that you submitted your project to